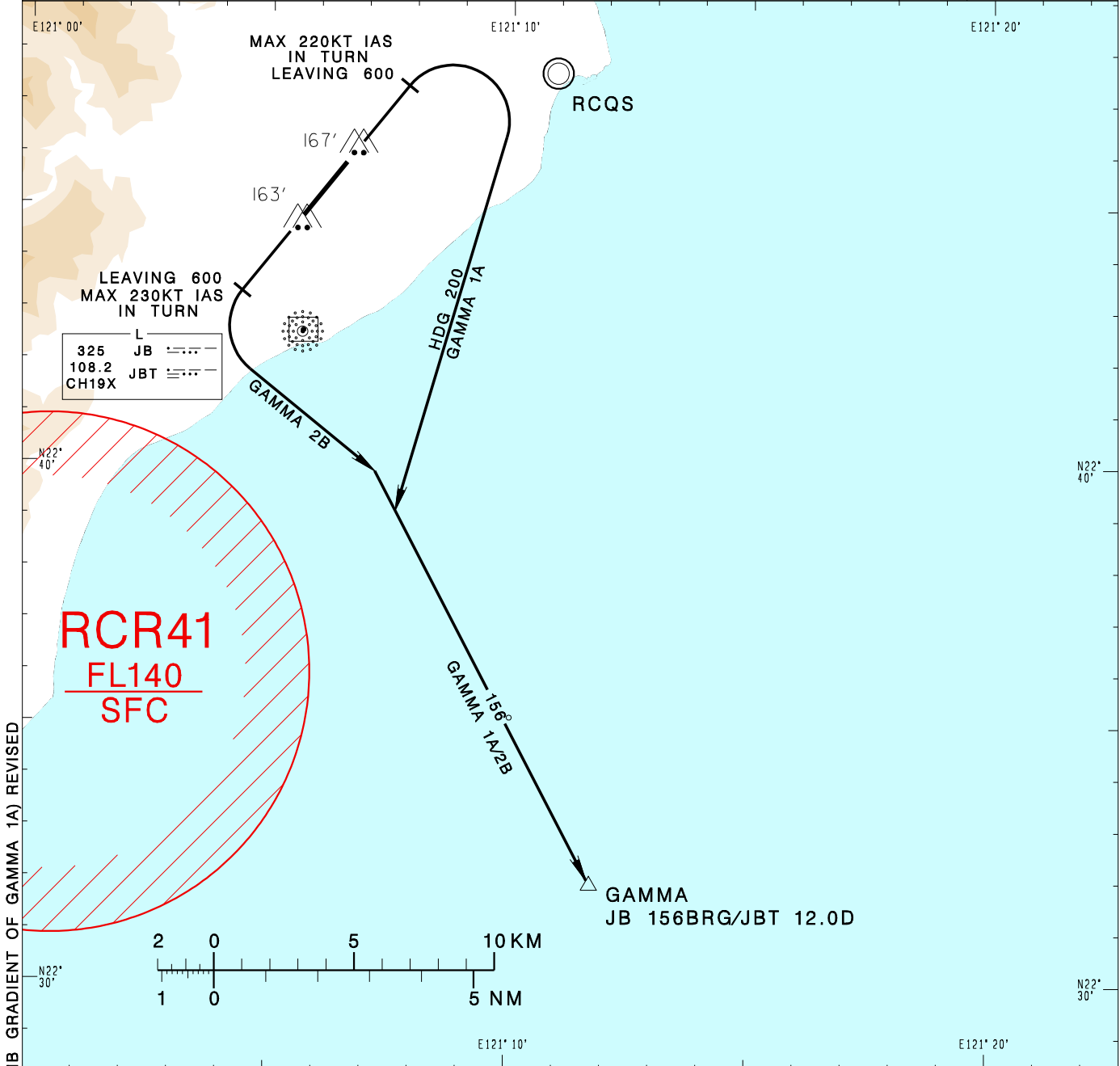


**臺東/豐年機場**  
TAITUNG/FONGNIAN AD

RCFN SID  
GAMMA 1A (RWY04)  
GAMMA 2B (RWY22)

KAOHSIUNG APP 119.4 228.2	FONGNIAN TWR 118.1 236.6	ATIS 127.0	VAR 4° W-2023 ↑	<p>MSA ARP 25NM</p>
Apt Elev: 143'		Trans Level: FL130		
BEARINGS ARE MAGNETIC; DISTANCES ARE NAUTICAL MILES; ELEVATIONS, HEIGHTS IN FEET				



CHANGES: NOTE 1 (REQUIRED CLIMB GRADIENT OF GAMMA 1A) REVISED

**GAMMA ONE ALFA DEPARTURE**  
Depart RWY HDG until 600ft, turn right HDG 200 to track JB 156BRG to GAMMA to join V14 transition.

**GAMMA TWO BRAVO DEPARTURE**  
Depart RWY HDG until 600ft, turn left to track JB 156BRG to GAMMA to join V14 transition.

**NOTE**

1. GAMMA 1A : Requires a minimum climb gradient of 5.0%(304 ft/NM) until 2000ft.
2. GAMMA 2B : Requires a minimum climb gradient of 3.5%(213 ft/NM) until established on JB 156BRG.
3. Caution close-in obstacles (trees & poles): 167ft MSL, 96m northeast of RWY22 THR & 163ft MSL, 69m south of RWY04 THR.
4. High terrain around the airport.